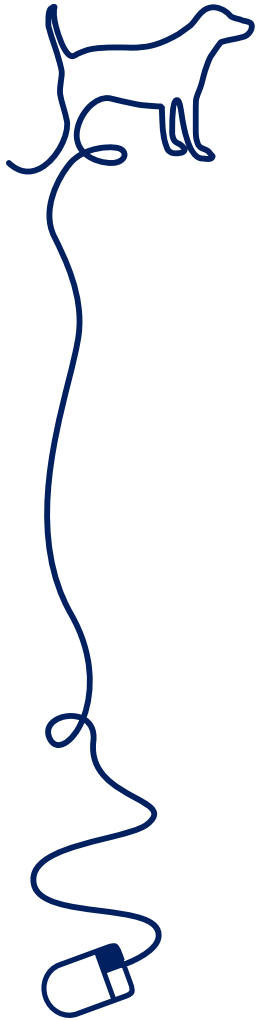


The Dog Course (VME_3001)



Dr. Patrick Larkin



While this class is offered through the University of Florida (UF), many students that take this class are not from UF.

Many Colleges and Universities accept this 3 credit class towards a student's degree, typically as an upper level elective.

Structure of the class

There are 15 weekly modules, all of which address specific topics about dogs.

! Unpublished Site

Home

Course Materials

Announcements

Assignments

Calendar

Discussions

Mail

Site Info

Site Stats

Syllabus

Student Help FAQ

Tests & Quizzes

Gradebook

Help

The navigation list to the left is where you will find the syllabus, assignments, tests and quizzes, etc.

Course Modules



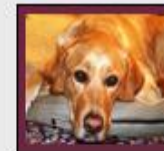
Week 1:



Week 2:



Week 3:



Week 4:



Week 5:



Week 6:

Etc...

Structure of the class

Each weekly module has specific learning objectives.

Inside the module, you still have access to the syllabus, tests, and assignments.

The discussion section includes a forum to post and respond to questions from/to classmates and faculty within the class.

Directions

This week is a short week. Because of this, you just need to watch the one lecture below, which describes how the class will operate. After you have watch the link, be sure to take the "Intro to Class" Quiz, which can be found on the left hand side of the screen in the "Assessments" tab.

Topic 1

Objectives

To learn about the Dog Class. Specifically, how the class will operate, how to contact the course director, when assignments are due etc...

What you need to do

Watch the following lecture below.

- "[How the class works](#)" lecture

***Note that you need your Gatorlink username and password to login to the lecture.**

Quiz

You take a quiz at the end of each week to reinforce concepts discussed in the lectures.

Structure of the class

Each weekly module is easy to navigate.

Topic 2

Objectives

Learn how case studies are presented and also learn about a medical condition in dogs called chylothorax.

What you need to do

Watch the following lecture presentation by [Dr. Brad Case, DVM, MS](#)

[Medical case study lecture chylothorax](#)

Watch
interactive
lectures

Explore more
about the
different
lecturers
in the class.

Etiology?

- Impairment of normal lymphatic drainage
 - Increased hydrostatic pressure -
 - cranial vena cava, cardiomyopathy, pericardial, PA heart worms
 - Disruption of lymphatics -
 - trauma, lymphangiectasis
 - Idiopathic (80%)

Copyright ©2011, VM Surgery, Cornell Univ.



UF College of Veterinary Medicine
UNIVERSITY of FLORIDA

Emergency & Office Phone: Small Animal, 352-392-2235; Large Animal, 352-392-2229; Ocala 352-512-0886

Home About the College Faculty Directory **J. Brad Case**

Contact Us

Administration

Departments

Faculty Directory

J. Brad Case

Assistant Professor – SA Surgery
Department of Small Animal Clinical Sciences
cas.eb@ufl.edu
PO Box 100126
2015 SW 16th Av
Gainesville, FL 32610-0126
352-392-2235
FAX: 352-846-2445

Education

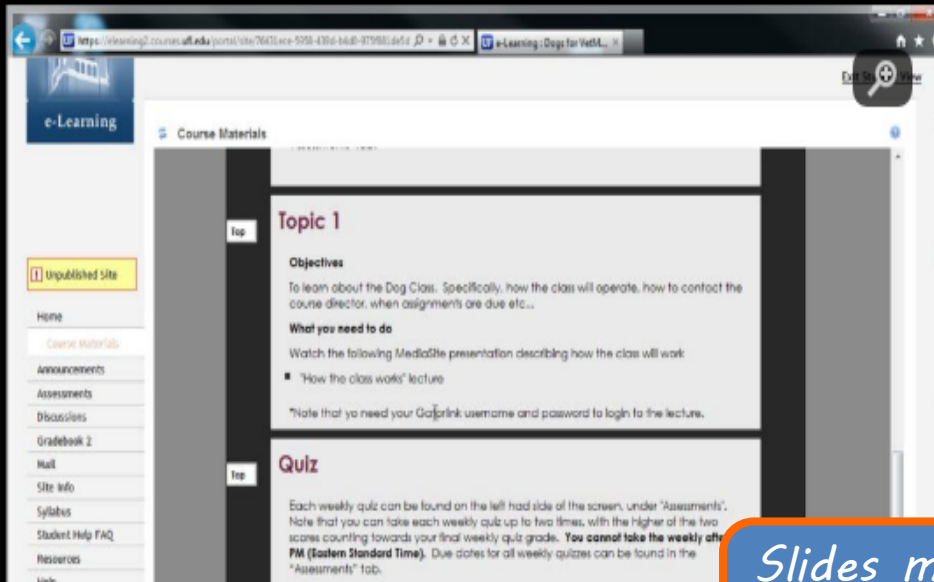
- BS, Biology, California State University, Sacramento, CA, 2001
- DVM, University of California, Davis, CA, 2006
- Internship, Small Animal Medicine and Surgery, Texas A&M University, College Station, TX, 2006-2007

Delivery of lectures

UF Academic Technology

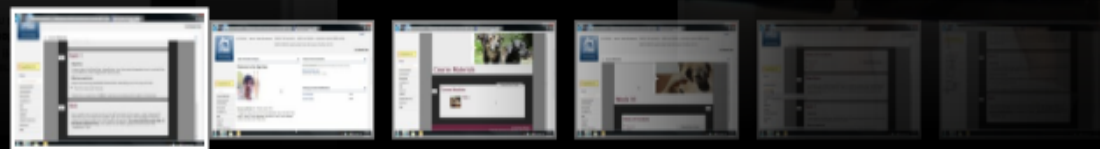
This technology is very similar to a face to face interaction.

Maintain visual of the professor during the lecture.



The toolbar along the bottom allows you to pause, fast forward, rewind, or skip to a portion of the lecture.

Slides move along as the professor lectures.



Instructional material

Watch high resolution videos of important medical topics

